

PRODUCT CATALOG

58th Edition



TRIED AND TRUE SINCE 1962

The highest quality materials, durable designs, and superior customer service make Big John stand alone.

Peek Inside to See Our Best Selling Commercial Grills!

www.BigJohnGrills.com

800-326-9575



© Big John Grills 2021



Al's Gourmet Sausage - Seattle, WA



Anchorage Sand & Gravel - Anchorage, AK



Angelo's Market - New Britain, CT

Mobility - Solutions for Every Event

Big John Grills can go anywhere you go and are built tough enough to do it time and time again. Do you need easy ramp loading? Check out our Country Clubs. Require folding legs and stackable storage? The portable line is right for you. Rather arrive in style? The Trail Boss makes hitch-and-go easy.

Easy to Operate with Little Wait

Our A-series grills provide genuine commercial quality. They heat up quickly and can reach 500° F in as little as 10 minutes and 800° F within 20 minutes. Our grills have the firepower to keep pace with your most challenging events. Simply light the grill and get cooking!

Big John?

I wouldn't trust any grill from a big box store to cook for all of my customers. When it comes to my kielbasa; I need my Big John Grills. I love them!

- Al's Gourmet Sausage

A Reputation for Quality

When you build grills that can last for 30+ years, you end up with a lot of happy customers. For 57 years our quality and durability remain unmatched and our customer service is like no other. We hear daily from loyal customers who have 20+ year-old grills and just need a replacement part. If you have a Big John story we'd love to hear from you! You may even find yourself in next years' catalog or featured on our Facebook page.



USS Oak Hill - Mediterranean Sea

Made in the U.S.A.

When you purchase equipment from Big John, you are getting a product made from the highest quality materials that is manufactured, assembled, and packaged in the U.S.A. We proudly support our military and veterans. Over 700 military installations worldwide use Big John equipment to serve the men and women of our armed forces. We thank those who have served and those currently serving.

Manufactured to Outlast Any Trend and Endure Any Environment



All American Picnic Co - New Palestine, IN

Built for Pro's and Regular "Joe's"

Achieve professional, world-class steakhouse sear marks & authentic barbecue flavor. Our grills feature heavy cast iron grates for those great sear marks, lava rock to evenly distribute the heat, wind-resistant stainless steel burners for increased temperature range, and separate fireboxes to control the temperature of each section.



Lava Rock Grills Are Better

Lava rock produces even heating across the cooking surface and simulates a bed of red hot coals that absorbs heat and emits an infrared signature to sear the meat locking in juice and flavor. All of the drippings are immediately vaporized into fragrant, white smoke adding that authentic barbecue flavor we all know and love.

An Introduction to Our A-Series Gas Grills

Different Body Styles, Same Great Grill

COUNTRY CLUBS



Pictured: A4CC with Cast Iron Grates

MOST POPULAR

Big John's strongest and most popular body style. The single piece chassis is manufactured from tubular steel making it easy to load, tie down, and transport in a truck or van. Large 8" wheels and 4" locking casters roll over rough terrain with ease. These models are designed to withstand years of use whether entertaining on your patio or traveling to every food festival across the country.

STAINLESS STEEL HOOD AND VINYL COVER AVAILABLE

PORTABLE



Pictured: A4P with Cast Iron Grates & A4FC

CATERER'S CHOICE

Perfect for off-site catering and custom applications such as food trucks and permanent outdoor kitchens. The compact two-piece design is stackable for transportation and storage. The separate folding leg cart and optional leg brace are strong and sturdy. This grill is a great logistical solution because there is a size that will fit in almost any vehicle.

STAINLESS STEEL HOOD AND VINYL COVER AVAILABLE

STAINLESS STEEL ELITE



Pictured: A4SSE with Stainless Steel Grates

COMMANDING PRESENCE

This statement piece on your patio will dazzle your guests with its overall presence while impressing chefs with its cooking ability. Our SSE chassis is built entirely of high quality 304 stainless steel to withstand years of harsh conditions like salt air. This grill is the best option for beach-front resort properties and seaside living. Stainless Steel Elites are a testament to our commitment to providing the professional cooking industry with equipment that is not only beautiful but built to last.

STAINLESS STEEL HOOD AND VINYL COVER AVAILABLE

Packages vs. Combos

How to Choose Which One is Right for You

COUNTRY CLUB



Pictured: A4CC Package

PACKAGES include Cast Iron Cooking Grates, 30 lb. Propane Tank, & Propane Tank Holder.



Pictured: A4CC Combo

COMBOS include Stainless Steel Cooking Grates, 30 lb. Propane Tank, & Propane Tank Holder.

PORTABLE



Pictured: A4P Package

PACKAGES include Cast Iron Cooking Grates, 30 lb. Propane Tank, Folding Leg Cart, & Leg Brace



Pictured: A4P Combo

COMBOS include Stainless Steel Cooking Grates, 30 lb. Propane Tank, Folding Leg Cart, & Leg Brace

CAST IRON GRATES



These high-performance grates are ideal for any chef wishing to obtain the coveted sear marks seen at world-class steak houses. A simple regiment of cleaning the cast iron grates after each use with a wire brush and then coating with oil produces an easy to care for non-stick surface.

STAINLESS STEEL GRATES



These durable stainless steel grates are perfect for operations that cannot clean and oil the grates immediately after each use or for grills located in salt water environments. These grates can be cleaned with a brass bristle or synthetic brush or placed in a commercial dishwasher.

In Stock

Country Club Gas Grills



Pictured: A4CC Package with Hood

A4CC

4 Firebox Sections // 8 Burners // 160,000 BTU Output
Cooking Surface 65" W x 16 ¼" D // Overall 72" W x 23" D x 34" H // 242 lbs.

Made with a Powder-Coated Steel Frame & Stainless Steel Firebox and Components



"Here at B & M Catering, we couldn't get the job done without our Big John Grills! We have catered events for over 4,000 guests at a time, and we know we can rely on our grills to help. The grills are very sturdy and reliable as well as being easy to transport. We highly recommend them!"

-B & M Catering

**B & M Catering
Pawtucket, RI**

Preferred Choice of Rental Stores & Grilling Professionals



Clambakes, Etc. - Sandwich, MA



Pictured: A3CC Combo

A3CC

3 Firebox Sections // 6 Burners
120,000 BTU Output
Cooking Surface 49" W x 16 ¼" D
Overall 56" W x 23" D x 34" H
190 lbs.

A2CC

2 Firebox Sections // 4 Burners
80,000 BTU Output
Cooking Surface 32 ½" W x 16 ¼" D
Overall 40" W x 23" D x 34" H
137 lbs.



Pictured: A2CC Stainless Steel

In Stock

Portable Gas Grills



Pictured: A4P with Cast Iron Grates & A4FC

A4P

4 Firebox Sections // 8 Burners // 160,000 BTU Output
Cooking Surface 65" W x 16 ¼" D // Overall 74" W x 23" D x 10" H
214 lbs.

A4FC

Overall 68" W x 24" D x 23" H
48 lbs.

Made with a Powder-Coated Steel Frame & Stainless Steel Firebox and Components



Pictured: A3P Combo

A3P

3 Firebox Sections // 6 Burners
120,000 BTU Output
Cooking Surface 49" W x 16 ¼" D
Overall 58" W x 23" D x 10" H
164 lbs.

A3FC

Overall 51" W x 24" D x 23" H
45 lbs.

Stack 'Em & Store 'Em



Folding Leg Carts are Manufactured from 11 Gauge Powder-Coated Carbon Steel



A2P

2 Firebox Sections // 4 Burners
80,000 BTU Output
Cooking Surface 32 ½" W x 16 ¼" D
Overall 42" W x 23" D x 10" H
115 lbs.

A2FC

Overall 35" W x 24" D x 23" H
42 lbs.

Pictured: A2P with Cast Iron Grates & A2FC

In Stock

Stainless Steel Elite



Pictured: A4SSE Combo
with Hood

A4SSE

4 Firebox Sections // 8 Burners // 160,000 BTU Output
Cooking Surface 65" W x 16 ¼" D // Overall 84" W x 23" D x 34" H // 270 lbs.



Beach House or Business Along the Coast?

Our Stainless Steel Elite Gas Grills are manufactured entirely from high-quality Type 304 stainless steel. SSE's are built to withstand years of harsh conditions like salt air making them ideal for beach front properties, resorts, and seaside living.

Beauty & Strength - The Ultimate in Quality & Durability

A3SSE

3 Firebox Sections // 6 Burners
120,000 BTU Output
Cooking Surface 49" W x 16 ¼" D
Overall 69" W x 23" D x 34" H
207 lbs.



Pictured: A3SSE Combo
with Hood

A2SSE

2 Firebox Sections // 4 Burners
80,000 BTU Output
Cooking Surface 32 ½" W x 16 ¼" D
Overall 53" W x 23" D x 34" H
147 lbs.



Pictured: A2SSE Cast Iron

Body & Components Manufactured from High-Quality Type 304 Stainless Steel

In Stock

Fixed Base Griddles



Pictured: PG-72S

PG-72S

6 Individual Burners // 180,000 BTU Output
Cooking Surface 72" W x 20" D // Overall 80" W x 23" D x 36" H // 245 lbs.



Verrill Farm - Concord, MA

Solid Construction

The perfect balance between durability and weight. The single piece chassis are manufactured from strong tubular steel (just like our country club gas grills) making them easy to load, tie down, and transport in a truck or van. Our ¼" thick steel griddle plates are securely bolted to the chassis increasing the strength and durability of the design.

Menu Versatility

Transition easily from breakfast to lunch to dinner. Griddles are the most versatile of all cooking appliances and one of our best selling equipment lines. If you want to give yourself the option to serve pancakes, fajitas, cheese steaks, stir-fried veggies, and even burgers all on the same piece of equipment, then our griddle is your best option.

Controllable Heat Zones

You have 2 choices - heat the griddle surface evenly to cook on the entire surface or graduated for cooking in the front and holding in the back. The large warming area under the stainless steel burners can hold full size food pans adding even more versatility.

Our Most Versatile Cooking Appliance

We have used Big John's grills & griddles for over 20 years. They are the work horses of our operation. We have had units from other manufacturers but they could not withstand the constant abuse & demands of a high volume cater. They're perfect for cooking for 50 guests or 5,000.

- All American Picnic Co



All American Picnic Co - New Palestine, IN



Pictured: PG-52S

PG-52S

3 Individual Burners // 126,000 BTU Output
Cooking Surface 52" W x 20" D
Overall 60" W x 23" D x 36" H // 196 lbs.

PG-36S

3 Individual Burners // 90,000 BTU Output
Cooking Surface 36" W x 20" D
Cooking Surface 44" W x 23" D x 36" H // 155 lbs.



Pictured: PG-36S with 30 lb. Propane Tank

In Stock

Portable Gas Griddles



Pictured: PG-52 Package

PG-52

3 Individual Burners // 126,000 BTU Output
Cooking Surface 52" W x 20" D
Overall 60" W x 23" D x 14 1/2" H
176 lbs.

A3FC

Overall 51" W x 24" D x 23" H
45 lbs.

Folding Leg Carts are Manufactured from 11 Gauge Powder-Coated Carbon Steel

"We love all of our Big John equipment from the utility stoves to the grills to the griddles. Our events would not be complete without them. They are consistent, easy to use, very durable & perform well under all conditions. They are well constructed & hold up to all the tests that we have put them through."

- Simply Fresh Events



Simply Fresh Events - Gaithersburg, MD

For Those with Limited Space - Stack and Transport

"We couldn't do our job without Big John Grills! We love that we can cook to order anywhere we go as the grills are easy to transport"

- Catering Connection



Catering Connection - Santa Barbara, CA



Pictured: PG-36 with A2FC and A2LB

PG-36

3 Individual Burners // 90,000 BTU Output
Cooking Surface 36" W x 20" D
Overall 44" W x 23" D x 14 ½" H
138 lbs.

A2FC

Overall 36" W x 24" D x 23" H
42 lbs.

In Stock

5' Charcoal Grills



Pictured: M-15B

M-15B

Screw-In Legs // 5" Casters

Cooking Surface 5' W x 2' D // Overall 71" W x 24" D x 31"- 34" H // 133 lbs.

THE STRONGEST, MOST RELIABLE CHARCOAL GRILLS ON THE MARKET

Best Grill Tops

Our easy to clean one-piece grill tops feature a welded steel core for strength and nickel plating for durability. Our simple slide action adjustment has 2 grilling heights to accommodate a wide variety of cooking needs.

Durable 1000° F Powder Coat Finish

Our specially formulated powder coat withstands the extreme heat of burning charcoal. It forms a chemical bond with the steel making it resistant to heat, scratches, corrosion, UV light, and fading.

Balance Between Strength & Weight

Our charcoal grills are designed to go wherever you go. They are the perfect balance between strength, durability, and weight. Manufactured to be rugged enough to last a lifetime yet weigh under 150 lbs.

American Quality

Big John Grills are manufactured, assembled, and packaged in the U.S.A. We take pride in our products and don't cut corners. All of the extra steps we take to ensure quality make our grills better. Don't be fooled by a knock-off. Be sure to know where your next grill is made.

Our Best Seller Since 1962

M-15AB

Screw-In Legs // No Casters
Cooking Surface 5' W x 2' D
Overall 71" W x 24" D x 31"- 34" H
132 lbs.



Pictured: M-15AB

M-15FB

Folding Legs // 5" Casters
Cooking Surface 5' W x 2' D
Overall 71" W x 24" D x 31"- 34" H
126 lbs.

Pictured: M-15FB Package



Georgetown University Grilling Society - Georgetown, MD

The ease of use combined with the opportunity to serve 300+ burgers every Friday are some things we love about Big John. The smell of charcoal burning and beef cooking matched with the sounds of laughter and classic rock are what make Every Friday so special for us here at Georgetown. We would not be able to continue this 16 year tradition of serving delicious burgers every week if it were not for Big John Grills. We love our Big John grills. We look forward to ordering many more grills in the future.
- Georgetown Univ. Grilling Society

In Stock

3' Charcoal Grills

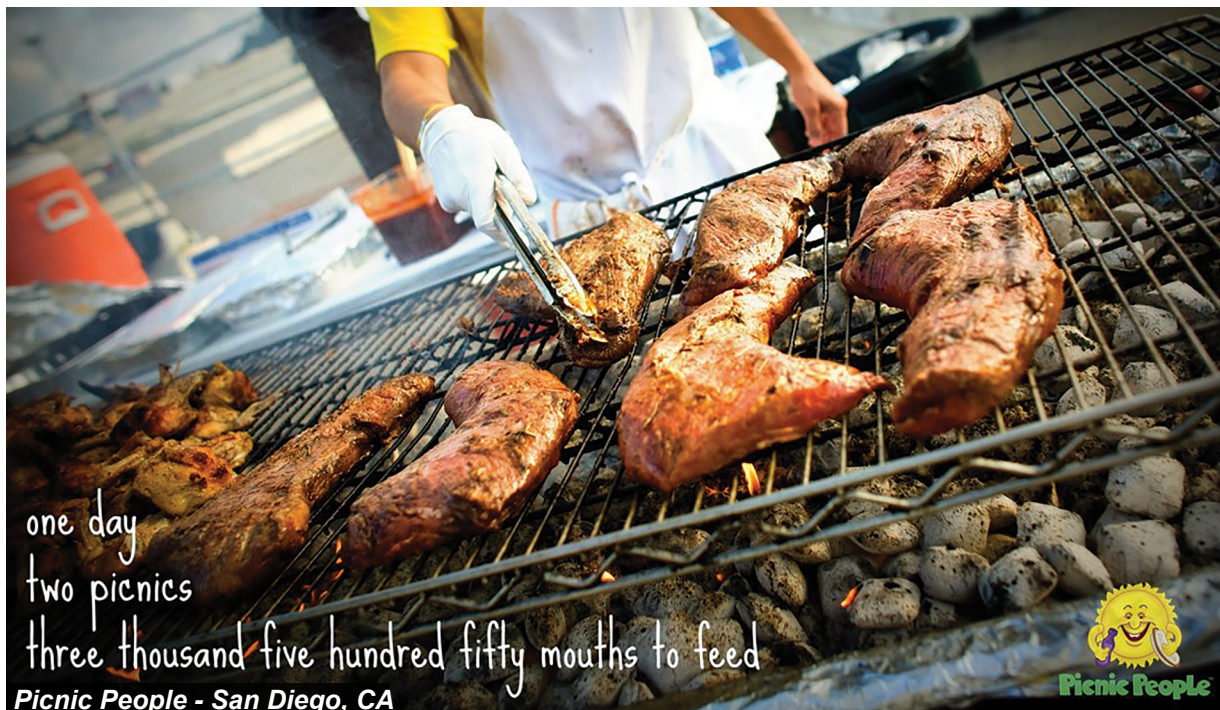


Pictured: M-13B

M-13B

Screw-In Legs // 5" Casters

Cooking Surface 3' W x 2' D // Overall 47" W x 24" D x 31"- 34" H // 94 lbs.



one day
two picnics
three thousand five hundred fifty mouths to feed
Picnic People - San Diego, CA



Our Little John - Small, But Mighty



Pictured: M-13FB Package

M-13FB

Folding Legs // 5" Casters
Cooking Surface 3' W x 2' D
Overall 47" W x 24" D x 31"- 34" H
87 lbs.



Pictured: M-13AB

M-13AB

Screw-In Legs // No Casters
Cooking Surface 3' W x 2' D
Overall 47" W x 24" D x 31"- 34" H
93 lbs.

Strongest Legs & Casters

Our M-13B & M-15B feature strong threaded steel pipe legs. The 5" solid rubber swivel casters are 1 1/4" wide for maneuvering over uneven terrain and can support up to 6 times the weight of the grill. For convenience, our model M-13FB & M-15FB feature folding legs for easy setup.

Not Too Big & Not too Small, It's Just Right

Our Little John is made just as tough as its big brother from the adjustable grate down to its wheels. The only thing it's missing is the 2 feet in the middle. The Little John proves you don't have to be the biggest to be the best.

In Stock

5' Charcoal Rotisseries



Pictured: M-251B

M-251B

Add-on Rotisserie for M-15B // Overall 78" W x 24" D x 13-24" H (Rotisserie Adjusts from 13" to 24" H)
125 lb. Spit Capacity // 5' Spit Length // 112 lbs.



Pictured: M-15B & M-251B Package

Stainless Steel Components

Our rotisseries are designed without compromise. We use Type 304 stainless steel to manufacture the spit, skewers, support bar, and support bar clamps. These components are durable, easy to clean, sanitary, and will not rust. Roast confidently knowing our hardware holds a whole animal or large roasts securely in place.

Reliable Motor

Our rotisseries utilize a reliable chain drive system that safely places the spits' entire weight onto the two supporting mounts. Other manufacturers use a direct-drive system that can put a damaging load on their motor and gearbox bearings. Our 1/20 hp electric motor turns at 7 rpm – the perfect speed for self-basting. Nobody knows rotisseries like Big John, it's in our name.

Original Rotisseries - Perfect for Open-Pit Slow Roasting

American BBQ Co - Denville, NJ



We have been using Big John Grills and Rotisseries for nearly 25 years. They have never let us down!

- American BBQ Co

M-35B

Rotisserie Only // Overall 78" W x 24" D x 37-48" H
(Rotisserie Adjusts from 13" to 24" H)
125 lb. Spit Capacity // 5' Spit Length
Screw-In Legs // 5" Casters // 170 lbs.



Pictured: M-35B Package

In Stock

Trail Boss Gas Grills

Durability You Can Count On

Designed for the road, these grills are easy to transport with no set-up or tear down required. We mount our best-selling gas grill to a 12 gauge steel, powder-coated trailer with heavy-duty running gear. Simply hook up to a 2" tow-ball and go.

Performance You Demand

Pull up to our next party with a Trail Boss and start cooking with the best tow behind gas grill on the market. Trail Boss grills use proven A4P gas grills (page 8) that feature separate firebox sections, lava rock, and independent burners for precise heat control of each section.

Trail Boss II

2 Grills // 8 Firebox Sections // 16 Burners
320,000 BTU Output // Cooking Surface 14.6 ft²
Overall 144" W x 60" D x 46" H
1405 lbs.



Roll Up to Your Next Event & Grill Like a Boss

In Stock & Ready to Go!

Built specifically for large cooking events, festivals, and barbecue competitions. These units are popular with Rental Stores, Caterers, Park & Rec Dept., Universities, Large Corporations & Distribution Centers, Hotels & Resorts, and Military Clubs.

Our Most Popular Tow Behind

Our Trail Boss Grills come standard with stainless steel hood(s) with thermometer(s), stainless steel cooking grates & warming rack(s), a storage box, and 30 lb. propane tanks. The UV resistant powder-coat finish helps protect the body from harsh travel conditions, rust, and scratches. Vinyl covers are available.



Trail Boss I

4 Firebox Sections // 8 Burners
160,000 BTU Output // Cooking Surface 7.3 ft²
Overall 116" W x 45" D x 46" H
817 lbs.

Built-to-Order Gas Tow Behind Grills



RW6SDG

6' Single Door Grill
2 Burners // 300,000 BTU Output
Cooking Surface 14.6 ft.²
Overall 144" W x 53" D x 63" H
Expanded Steel Grate
1100 lbs.

Pictured: RW6SDG Combo

Combo Includes: Two 40 lb. Propane Tanks, 13" Wheel & Tire Upgrade and Wood Cutting Board



6' Single Door Rotisserie
2 Burners // 300,000 BTU Output
Cooking Surface 13.1 ft.²
Overall 144" W x 53" D x 63" H
6' Roasting Cage // 120 Volt Motor
Expanded Steel Grate
1200 lbs.

Pictured: RW6SDR Combo

Combo Includes: Two 40 lb. Propane Tanks, 13" Wheel & Tire Upgrade and Wood Cutting Board

When the Only Thing that Matters is Size

RW6DDG

6' Double Door Grill
2 Burners // 300,000 BTU Output
Cooking Surface 19.8 ft.²
Overall 140" W x 60" D x 63" H
Expanded Steel Grate
Steel Warming Rack
1300 lbs.



Pictured: RW6DDG Combo

Combo Includes: Two 40 lb. Propane Tanks, 13" Wheel & Tire Upgrade and Two Wood Cutting Boards

RW8DDG

8' Double Door Grill
2 Burners // 300,000 BTU Output
Cooking Surface 26.8 ft.²
Overall 168" W x 60" D x 63" H
Dual Axle // Expanded Steel Grate
Steel Warming Rack
1540 lbs.



Pictured: RW8DDG Combo

Combo Includes: Two 40 lb. Propane Tanks, Two 13" Wheel & Tire Upgrades and Two Wood Cutting Boards

Built-to-Order

Charcoal Tow Behind Grills



6SDG

6' Single Door Grill
Cooking Surface 14.6 ft.²
Overall 120" W x 53" D x 58" H
Expanded Steel Grate
800 lbs.

Pictured: 6SDG Combo

Combo Includes: 13" Wheel & Tire Upgrade and Wood Cutting Board



6SDR

6' Single Door Rotisserie
Cooking Surface 13.1 ft.²
Overall 120" W x 53" D x 58" H
6' Roasting Cage // 120 Volt Motor
Expanded Steel Grate
1000 lbs.

Pictured: 6SDR Combo

Combo Includes: 13" Wheel & Tire Upgrade and Wood Cutting Board

When the Only Thing that Matters is Size

6DDG

6' Double Door Grill
Cooking Surface 19.8 ft.²
Overall 111" W x 60" D x 63" H
Expanded Steel Grate
Steel Warming Rack
950 lbs.



Pictured: 6DDG Combo

Combo Includes: 13" Wheel & Tire Upgrade and Two Wood Cutting Boards

8DDG

8' Double Door Grill
Cooking Surface 26.8 ft.²
Overall 144" W x 60" D x 63" H
Expanded Steel Grate
Steel Warming Rack
1300 lbs.



Pictured: 8DDG Combo w/ Tandem Axle

Combo Includes: 13" Wheel & Tire Upgrade and Two Wood Cutting Boards

In Stock

E-Z Way Smoker/Roaster



Pictured: E-Z Way Smoker/Roaster

Pictured: 44-Slot Rib Rack (Included)

E-Z Way

80,000 BTU Burner // 40 lb. Propane Tank // Cooking Surface 5' W x 2' D // Overall 115" W x 42" D x 48" H
44 Slot Rib Rack // Stainless Steel Drip Pan // Smoker Tray // 150° - 350° Temp Range // 650 lbs.

ROASTING TIME

200 lb Pig: 7-9 Hours // 300 lb Pig: 9-12 Hours

Set It & Forget It - The Easiest Pig Roast Ever



*The E-Z Way is the Best! I've used other brands and I will never go back. The results are consistent and the hogs are juicy. The slide-out smoker tray is a great design which is crucial for those first hours of smoking. It's easy to use so I have more time to focus on the flavor. Big John's customer service is excellent & always ready to help when needed. - **Porketta***



*100% Natural Wood Smoking Pellets
Available in Cherry, Oak, Hickory,
Mesquite, Alder, Apple, & Pecan Flavors*

In Stock

Steam Tables



ST-4

4 Bays // 28,000 BTU Burner
Overall 58 ½" W x 25" D x 33" H // 128 lbs.

ST-3

3 Bays // 28,000 BTU Burner
Overall 45" W x 25" D x 33" H // 106 lbs.

ST-1

1 Bay // 7,000 BTU Burner
Overall 25" W x 16 ½" D x 15 ½" H // 17 lbs.

In Stock

Utility Stoves



Pictured: Big 60 II & Big 60 I

Big 60 II

2 Burners // 2,000 - 120,000 BTU Output
Overall 39" W x 22" D x 10" or 25" H // 80 lbs.

Big 60 I

1 Burner // 2,000 - 60,000 BTU Output
Overall 19" W x 22" D x 10" or 25" H // 47 lbs.

All Big 60's Come With Extension Legs

In Stock

Single Burner Pot Cooker



Pictured: KK50 and KK50 with 40 Qt. Pot

KK50

1 Burner // 2,000 - 50,000 BTU Output
Overall 14" W x 24" D x 6" H // 20 lbs.

Built for Table-Top Use

In Stock

Commercial Built-In Gas Grills



PLEASE VISIT OUR WEBSITE
FOR MORE INFORMATION



A4TS

A3TS

A2TS

A1TS/60

In Stock

Residential Built-In Gas Grills



PLEASE VISIT OUR WEBSITE
FOR MORE INFORMATION



210-40

210-28

210-20

210-30

Built-to-Order

210 Mobile Models



PLEASE VISIT OUR WEBSITE
FOR MORE INFORMATION

Pictured: 210-40/20M

Big John Grills & Rotisseries
526 E. Rolling Ridge Drive
Bellefonte, PA 16823

Presorted Standard
U.S. POSTAGE
PAID
BIG JOHN CORP.

What's Inside

Gas Grills.....	2-11
Gas Griddles.....	12-15
Charcoal Grills.....	16-19
Charcoal Rotisseries.....	20-21
Tow Behind Gas Grills.....	22-25
Tow Behind Charcoal Grills.....	26-27
Tow Behind Smoker.....	28-29
Steam Tables.....	30
Utility Stoves/Pot Cookers.....	30
Commercial Built-In Grills.....	31
Residential Built-In Grills.....	31
Residential Mobile Grills.....	31

Ordering Information:

We can provide same day processing on orders received by 1:00 P.M. EST for In-Stock Items

Place your order today!

800-326-9575

www.BigJohnGrills.com

